

Product Data Sheet

MS-S-Manual Swing Flood Barrier



Our MS-S series manual swing flood barrier is fabricated with our partner San Jeou Industrials. Fully constructed in stainless steel MS-S series flood barrier is designed to withstand any outdoor weather conditions and flood water up to 3m. With the all round carefully designed rubber packing seal, the water tightness is kept at 99%. All barriers are custom designed and made in Taiwan, ensuring high quality material and workmanship.

## Specification

### Sizes

- Maximum single leaf spans up to 7m
- Single or double leaf configuration
- Maximum effective height of 3m

### Construction

- Full Stainless Steel Frame, hinge and handles
- All round packing rubber seal for up to 99% water tightness



Single Leaf Model

Model: MS-S1



Double Leaf Model

Model: MS-S2



Accessories

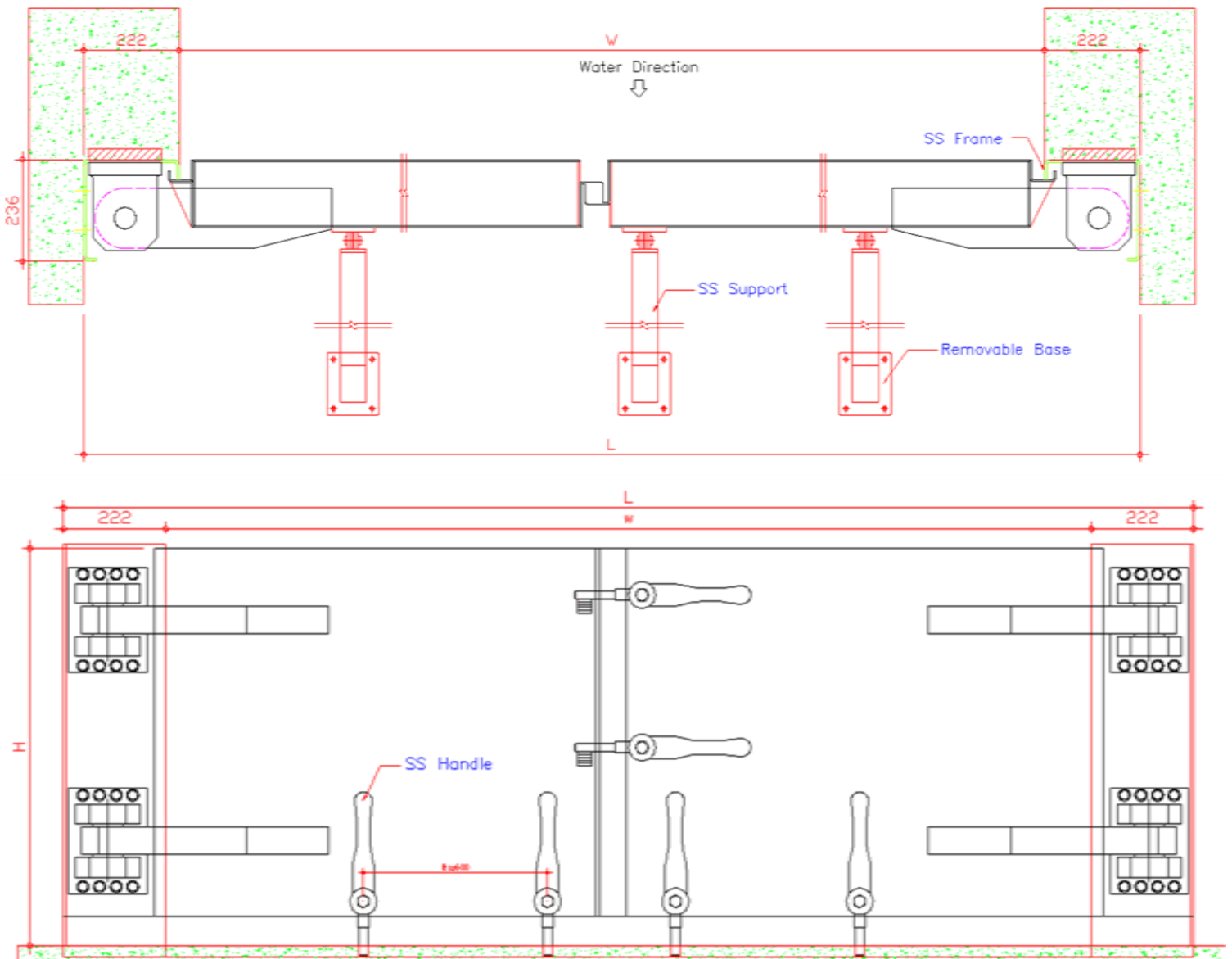
Stainless Steel Hinge



Stainless Steel Lock Handle

## Technical Specification

Model	Material	Seal	Max Width	Max Height	Additional Support
<b>MS-S1</b>	Stainless Steel	Natural Rubber	7m	3m	Yes
<b>MS-S2</b>	Stainless Steel	Natural Rubber	8m	3m	Yes



All MS-S series products are recommended to undergo maintenance at least once a year and seal replacement every 2 years.

All MS-S series products are fabricated in Taiwan by San Jeou Building Material Industry Co. Ltd and distributed and installed by Delta Technology Pte Ltd.

**RISK AND PROPERTY**

Risk of damage to or loss of the Goods shall pass to the Buyer at a time when the Goods are handed over to the Buyer after delivery or job completion. The Seller will not be held liable for any damage to the Goods once the Goods is delivered or installation is handed over to the Buyer. The Buyer or any third parties will have to bear the cost of the damaged Goods.

The Seller shall not be held liable or accountable in any way if there is any damage to personnel or property due to improper usage of the Goods by the Buyer or any third parties. Proper safety procedure shall always be observed while operating the Goods.

**WARRANTY**

The Seller warrants for 12 months that Goods, manufactured by them shall be of sound material and workmanship and that good workmanship shall be employed in assembling parts or materials not manufactured by them. This warranty is given subject to the following:-

The Seller shall be under no liability in respect of any default arising from fair wear and tear, third parties damage, negligence of the Buyer, abnormal working conditions, failure to follow the Seller's product usage instructions (whether oral or in writing), safety procedures, misuse, or alternation or repair of the Goods without the Seller's approval.

The Buyer shall be responsible for ensuring the accuracy of the items (including specification) of any order and the Seller shall be under no liability in respect of any defect in the Goods arising from drawing, design, information or specification supplied by the Buyer.

Whilst every care is taken to ensure the operation of the Goods is satisfactory, no guarantee is given and any warranty is conditional on the Goods being installed, commissioned, serviced and maintained or under extreme weather condition that the product is not design for.

A service agreement is not provided as part of our guarantee but is available at an additional and competitive cost.

Singapore's Distributor & Installer :



[www.deltatech.com.sg](http://www.deltatech.com.sg)

Email: [enquiry@deltatech.com.sg](mailto:enquiry@deltatech.com.sg)

TEL: 63822621 FAX: 62813496

NO 34 LOYANG CRESCENT SINGAPORE 508993

Manufacturer :



**三久建材工業股份有限公司**

No.3, 481 Lane, Dali Rd,  
Dali district, Taichung City  
<http://www.sjtch.com.tw>