

# ROLLER DOOR

RD

**Delta Tech Group**



**Delta Technology Pte Ltd**

**(RD) SBS Roller Door Pte Ltd**  
By Delta Technology

Address: 34 Loyang Crescent Singapore 508993

Tel: +65 6382 2621 | +65 6285 7813

Fax: 65 6281 3496 | +65 6285 8150

Email: [enquiry@deltatech.com.sg](mailto:enquiry@deltatech.com.sg)

Website: [www.deltatech.com.sg](http://www.deltatech.com.sg)



# ROLLER DOOR

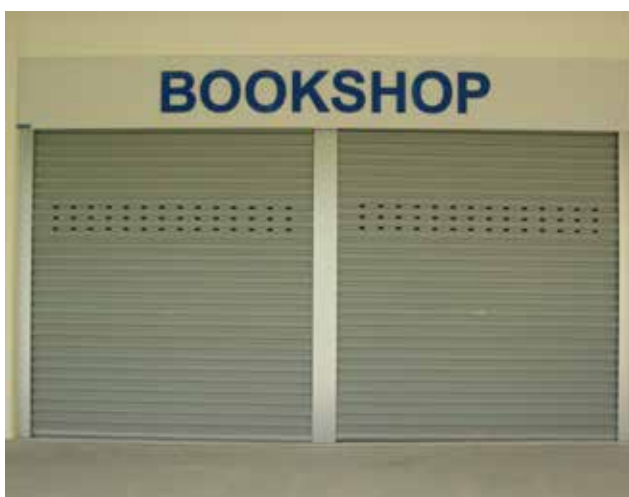
## Introduction

Under our Delta Tech Group, Roller Door Model operates by DC motor connected to our Intelligent Control Box in which it runs faster than most traditional roller shutter. There are nylon strips integrated at the side edge of the curtain and safety rubber seal on the bottom that gives a swift, soft, safe and smooth operation

RD is commonly installed in places such as schools, industrials, garage, stalls and HDB comprising both security and convenience.



RDA	Motorised RD
RDM	Manual RD



## Distinctive Features



### Fast Speed<sup>^</sup>

Using DC motor drive and planetary gear system, our RD opens and closes at 0.2m/s\*, greatly reducing waiting time. This drive system also increases the usage frequency of the RD, more than 30# times daily.



### Zinalume

The curtain of the RD is formed by corrugated Zinalume. The Zinalume is a special alloy comprising zinc and aluminum with a center steel core. Ensuring that the curtain is strong, flexible and excellent corrosion resistance.



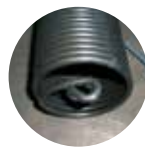
### Silent Operation

By installing Nylon-polyglide along the side edges of the curtain, the noise during operation is greatly reduced. At the same time, the Nylon-polyglide ensures smooth movement during operation.



### Safe<sup>^</sup>

Our RD has pre-installed safety edge feature where the curtain will automatically stop and reverse if it encounters an obstruction during closing. To enhance safety further, our RD is also equipped with soft start and stop where the curtain will speed up then slows down during operation. All controls signals are low DC voltages.



### Spring Balance

The weight of RD zinalume curtain is balance and countered by using high performance spring. The spring balancing reduces the strain on the motor drive. Hand chain can also be integrated for high RD.



### Intelligent System(IS)<sup>^</sup>

IS has a control box system Brake Renagement Device that stops the shutter once it touches the ground, this will protect the shutter and the ground from any damages.

## Material & Finish Details

Part	Material	Coating
Slat	0.53mm Thick Zinalume	Colourbond
Side Guide	1.8mm Thick Aluminium	Natural/Brown Anodized, Powder Coated, Fluorocarbon
Bottom Bar	Mild Steel	Colourbond
Shutterhood Cover	Mild Steel, SUS304	Electro-galvanized, Colourbond, Powder Coated, Fluorocarbon

<sup>^</sup> Motorised Model Only

\* Top speed is approx.; based on door dimensions of 3000mm by 3000mm.

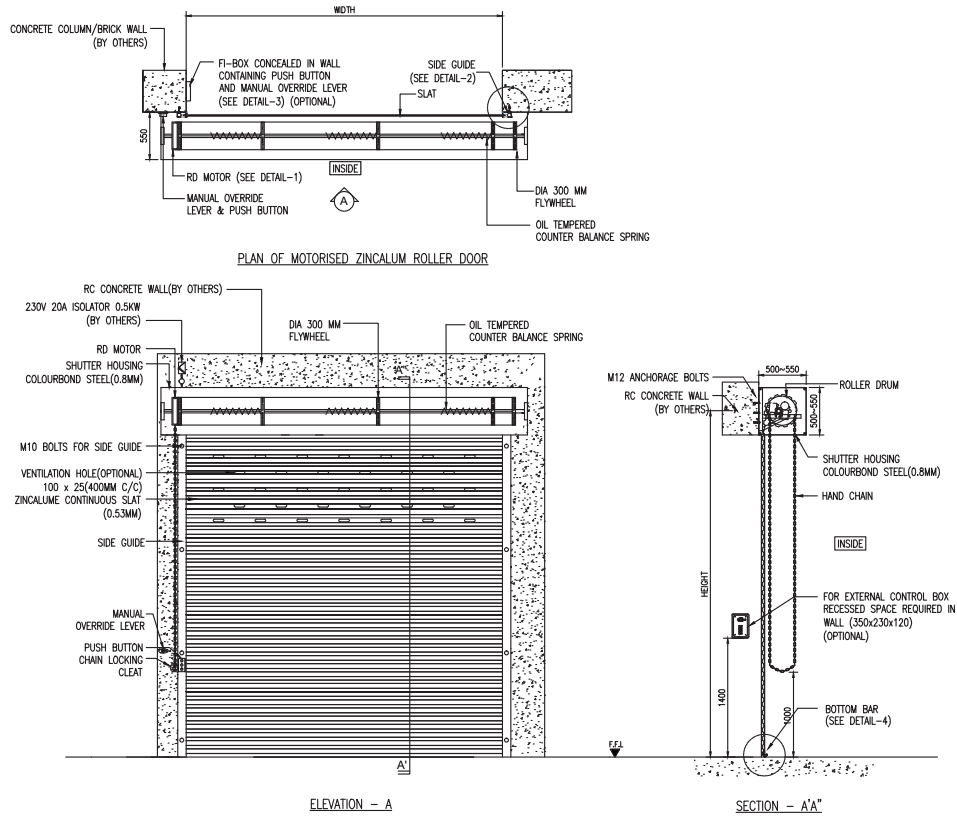
# Usage frequency cycle includes opening & closing as 1 cycle; based on door dimensions of 3000mm by 3000mm with proper maintenance.

\*Refer to Oxyplast Chart for powder coating colour option

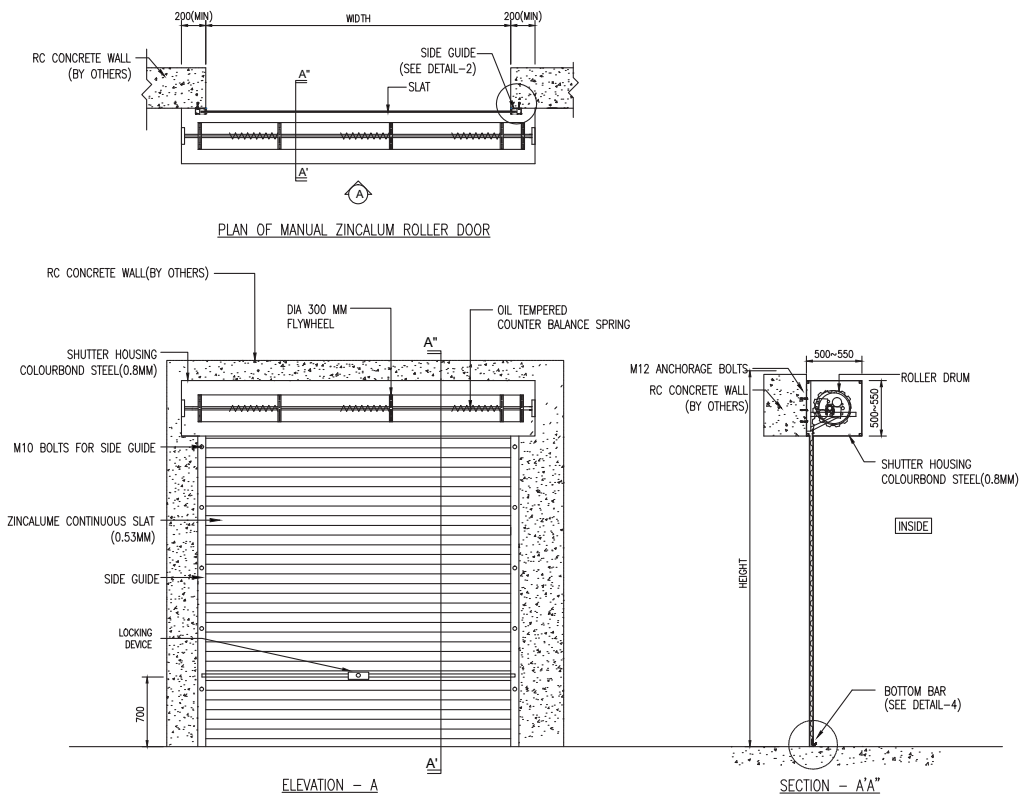
\*Refer to DNT Chart for fluorocarbon coating colour option

# Typical Drawing

## Motorised Roller Door Components



## Manual Roller Door Components

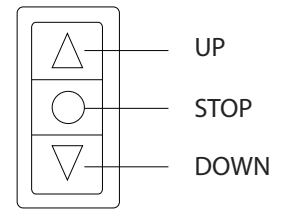




## Instruction Uses

### Push Button (External)

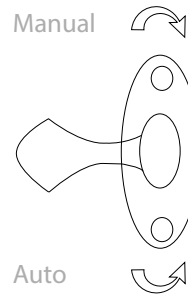
1. To Open: Press up once and release
2. To Close: Press down once and release, door will close after 1 minute
3. To Stop: Press stop once and release



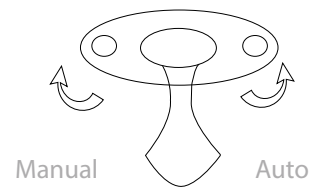
Electrical Push Button

### Push Button (Internal)

1. To Open: Press up once and release
2. To Close: Press down once and release
3. To Stop: Press stop once and release



Manual Lever (Int)



Manual Lever (Ext)

### Lever Handle (Internal & External)

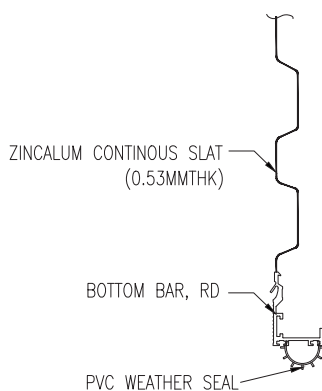
1. Only switch to manual operation when power off or motor fail
2. Use manual handchain to open or close shutter

## Shutter Specifications

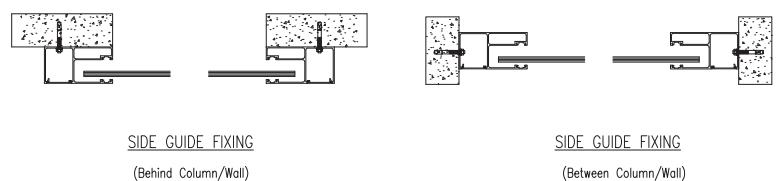
Item		Model	Motorised	Manual
Maximum Single Span			6000mm (Width)	3000mm (Width)
			6000mm (Height)	3000mm (Height)
Main Body	Side Guide		W55 x L103 (1.8mm thick)	
	Shutterhood		500~550	
	Curtain		0.53mm	
	Bottom Bar		"L" Shape	
Motor	Power		230V , 13amp , 0.5Kw	
	Speed		0.2m/s	

\*All dimensions in mm.

## Slat Profile



## Side Guide Fixing Position



# Components

## Basic Components



Push Button Box  
Electrically operate  
(Mechanical)



Control Box  
Intelligently  
Operation



Motor  
Roller door  
motor operator

## Optional Components



UPS  
For emergency  
back-up battery  
power



Remote  
Handheld controller  
to operate shutter



Motor Cover  
Protection Cover for  
motor



BMS  
To monitor the  
shutter position  
(open/ close/ fault)  
from BCC/FCC

Others  
Wind Lock  
Explosion Proof  
Remote Interfacing System

### Remarks:

- Due to the properties of printing ink, the colour of the product may differ from the actual color.
- The specifications are subject to change without notice for improvements.
- All items are subjected to Delta Tech Group Terms & Conditions (available at our website, <http://www.deltatech.com.sg>)
- Not all components are applicable

**Delta Tech Group**



**Delta Technology Pte Ltd**

**RD SBS Roller Door Pte Ltd**

Address: 34 Loyang Crescent Singapore 508993

Tel: +65 6382 2621 | +65 6285 7813

Fax: 65 6281 3496 | +65 6285 8150

Email: [enquiry@deltatech.com.sg](mailto:enquiry@deltatech.com.sg)

Website: [www.deltatech.com.sg](http://www.deltatech.com.sg)

